

Technical Supplement

Subject: This supplement will provide instructions on adding or removing Z-Wave® devices from the Côr™ Home Automation panel.

NOTE:

Best Practice, Remove Z-Wave® Devices before you add them.

Removing the Z-Wave® device before you add it to the system is good practice in case the Z-Wave® device has been previously enrolled into another system. The removing of the device erases the network settings that are entered each time a module is enrolled into a specific system.

Using the Device Room Location drop down provides the ability to group Z-Wave® devices into a single room. This will enhance the programming ability when creating Automations or if all the Z-Wave® devices needed to activate at one time in the manual mode.

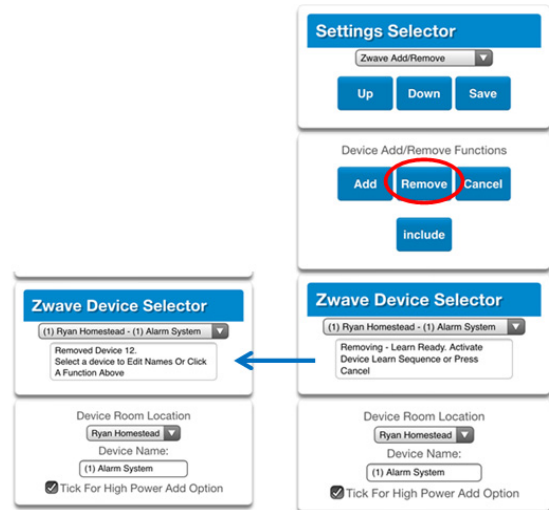
REMOVE Z-Wave® Device

Under Setting Selector, Select **Z-Wave® Add/Remove**

Step 1 Select the **Remove**

Step 2 Follow the instruction of the Z-Wave® device to learn into the Côr™ Home Automation panel.

Step 3 In the window under Z-Wave Device Selector it will say “Removed Device XX” when it has successfully removed in the device.



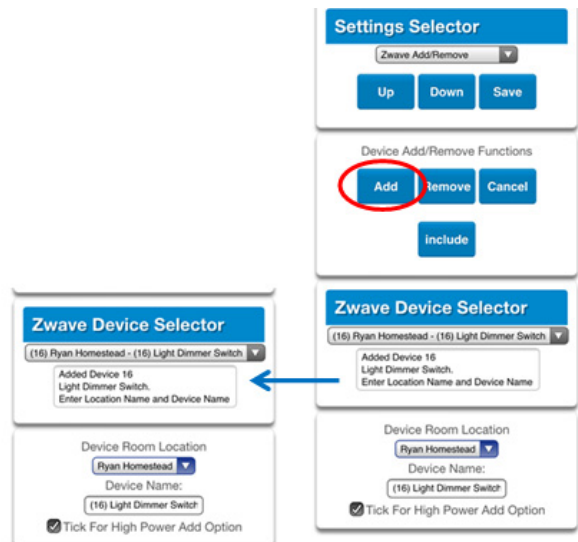
ADD Z-Wave Device

Under Setting Selector, select **Z-Wave® Add/Remove**

Step 1 Select the **ADD**

Step 2 Follow the instruction of the Z-Wave® device to learn into the Côr™ Home automation panel

Step 3 In the window under Z-Wave® Device Selector it will say “Added Device XX” when it has successfully learned in the device.



Inclusion can be used with a Z-Wave® remote Controller to assist with the **Add Device** process.

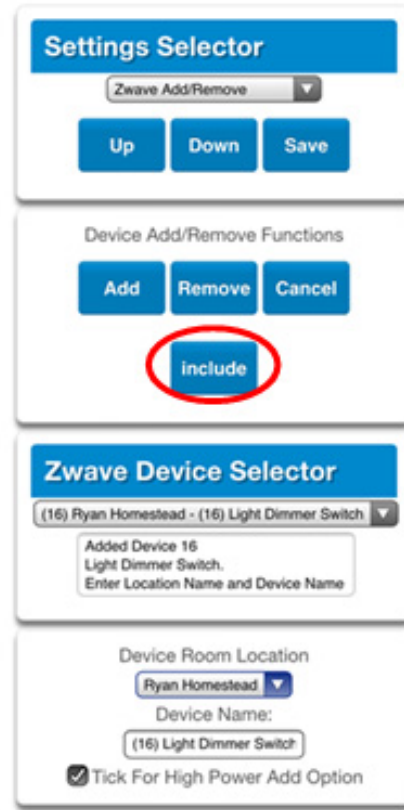
This can be used when devices are installed and are out of range of the Cór™ Panel.

You would Add the Z-Wave® devices to the Remote Controller, then with the Inclusion option, the Z-Wave® devices can be transferred from the Remote Controller to the Cór™ panel.

Cancel Button

At any time while Adding or Removing a Z-Wave device, pressing **Cancel** will void the programming.

NOTE: The Z-Wave chip set uses self-healing technology. The routing tables are optimized when a new Z-Wave device is added.



Cór™ Home Automation is not responsible for products and services offered by other companies. The images, product information and specifications listed in this document are subject to change.